

### **Immersible Ultrasonic Transducer**

Immersible ultrasonic transducer unit can be installed in the tank by three ways: side, top and bottom. The ultrasonic cleaning device is composed of the immersion ultrasonic transducer and generator. If ultrasonic cleaning machine of the standard model cannot be applied to a specific working environment, you can also make immersion ultrasonic transducer pack according to customizing special specifications.

### **Buy Customized Immersible Ultrasonic Transducer with High Quality**

Immersible ultrasonic transducer unit can be installed in the tank by three ways: side, top and bottom. The ultrasonic cleaning device is composed of the immersion ultrasonic transducer and generator. If ultrasonic cleaning machine of the standard model cannot be applied to a specific working environment, you can also make immersion ultrasonic transducer pack according to customizing special specifications. The immersible ultrasonic transducer working positions can be installed to fluid tank top side, bottom side or both side to achieve different cleaning effects. It is of an all stainless steel structure, Strong acid- and strong alkali-resistant material is used to reinforce and tighten welding.



Clangsonic provides varies of capacities of ultrasonic cleaner. Please contact us for customized tank size.

### **Immersible Ultrasonic Transducer Parameter ( Specification )**

Ultrasonic Frequency	40kHz (Customizable)
Ultrasonic Power	1000W (Customizable)
Size	800x300x130mm (Customizable)
Material	SUS304, 2.0mm

Surface Treatment Hard Chrome Plated

Cable Length 5m

Transducer Quantity 20pcs

Power (Watts)	Dimensions(W × L × H)	
	28KHz	40KHz
600	165 × 457 × 86 mm	146 × 406 × 70 mm
600	254 × 356 × 86 mm	210 × 279 × 86 mm
800	165 × 603 × 86 mm	146 × 540 × 86 mm
800	311 × 311 × 86 mm	279 × 279 × 70 mm
1000	318 × 457 × 86 mm	146 × 800 × 70 mm
1000	254 × 610 × 86 mm	210 × 540 × 70 mm
1000	165 × 902 × 86 mm	279 × 406 × 70 mm
1200	203 × 1003 × 86 mm	165 × 825.5 × 70 mm
1200	254 × 711 × 86 mm	241 × 600 × 70 mm
1200	318 × 543 × 86 mm	279 × 470 × 70 mm
1500	165 × 1219 × 86 mm	165 × 1054 × 70 mm
1500	254 × 889 × 86 mm	254 × 889 × 70 mm
1500	318 × 610 × 86 mm	279 × 571 × 70 mm

NOTES: Usually the dimensions for immersible transducer depend on its installation way and customers' tank size. Please talk to us for suggestion.

### Immersible Ultrasonic Transducer Features and Application:

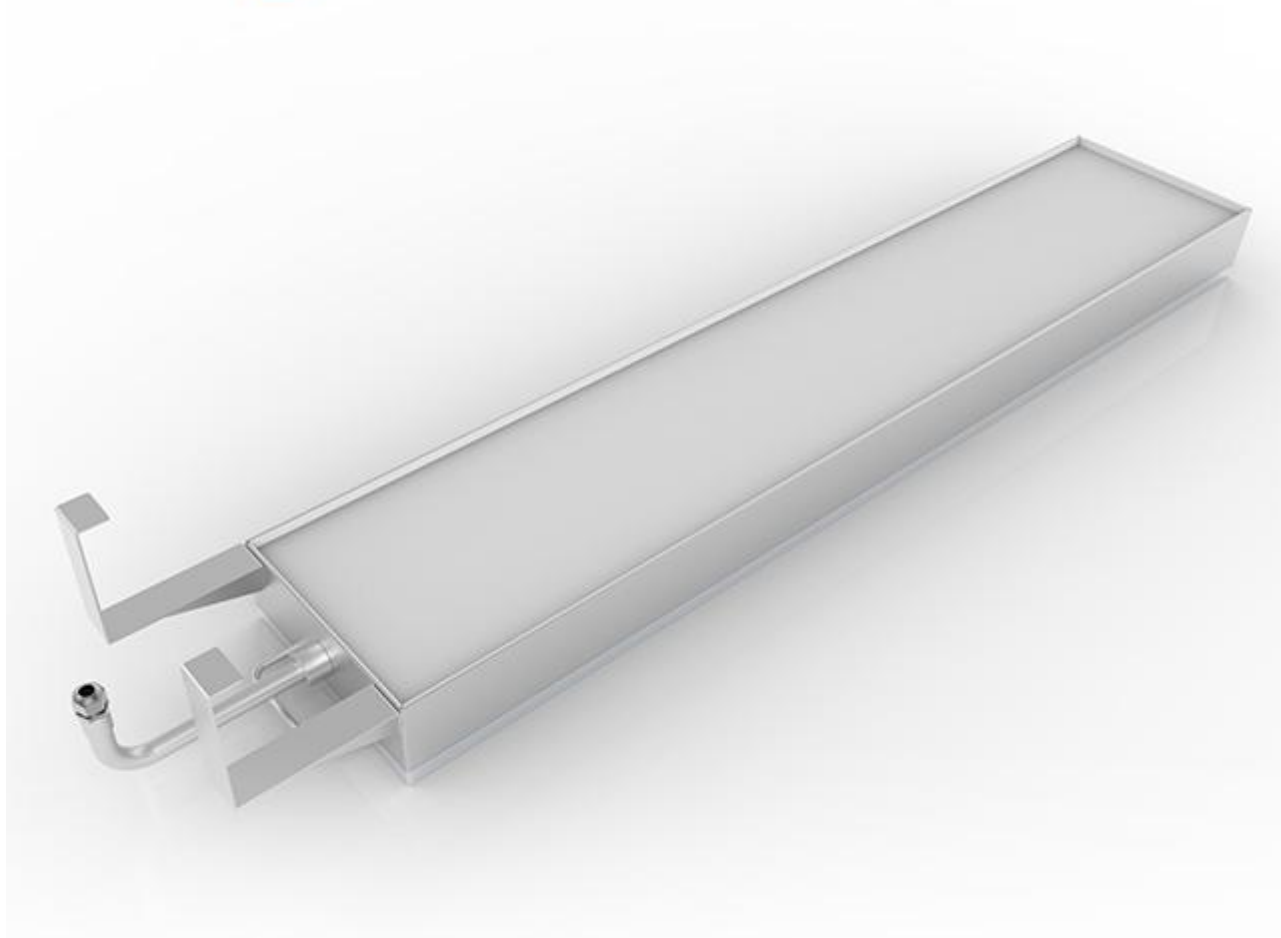
1. Imported SUS 304 and SUS316L optional
2. Hard chrome plated surface
3. Special gluing process which can ensure highly coupled between ultrasonic transducer and SUS

plate

4. High quality ultrasonic transducer, stable performance and high output efficiency
5. Optimized ultrasonic vibration and sound field
6. Single frequency 28kHz, 40kHz, 68kHz, 80kHz and 130kHz, other frequencies can be customized
7. Dual-frequency 28/68kHz, 40/80kHz, 80/130kHz and 40/130kHz

**Details Images:**

**clangsônic**



clangsônic

[www.clangsonicultrasonics.com](http://www.clangsonicultrasonics.com)

clangsônic

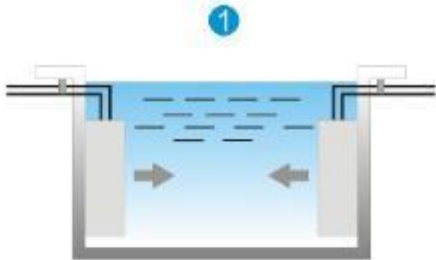
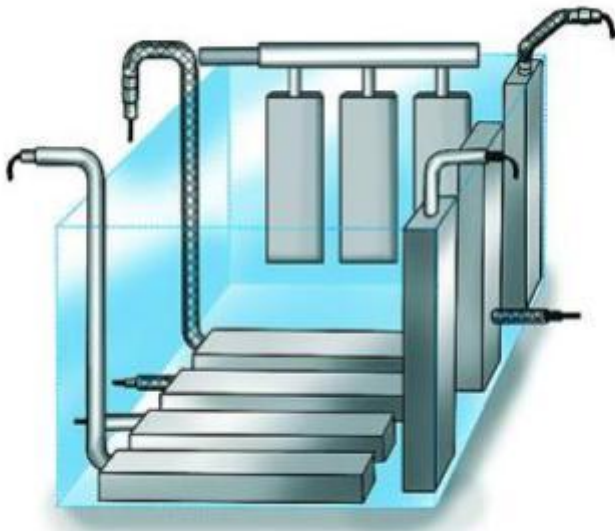


**clangsônic**

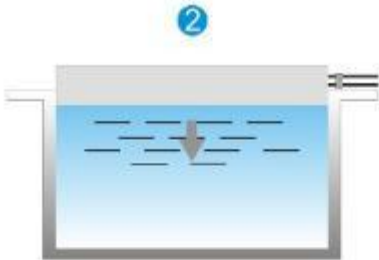
[www.clangsonicultrasonics.com](http://www.clangsonicultrasonics.com)

**clangsônic**

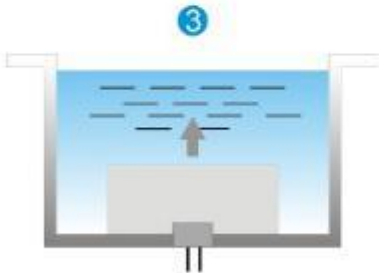




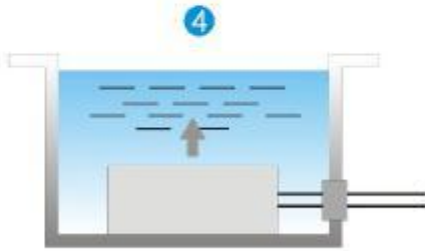
both side type



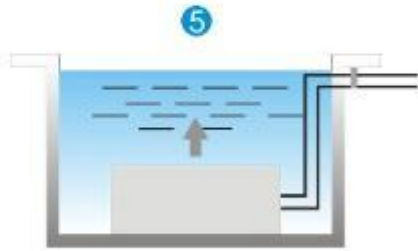
top type



bottom type  
pull out wire from bottom



bottom type  
pull out wire from side



bottom type  
pull out wire from top

Company Qualification

## clangsonic

Yuhuan Clangsonic Ultrasonic Co., Ltd. is a professional engaged in ultrasonic transducer, ultrasonic shock box, ultrasonic (generator) power and ultrasonic equipment research and application of the manufacturer.

Since 2003 the company since its establishment, unswervingly adhere to the higher quality and better service as our ultimate goal.

Our products are exported to the world more than 40 countries and regions. To provide customers with a full range of ultrasonic products and solutions, so that waves of the company to become a global customer real partners.



The company has an effective construction area of over 6,000 square meters, with imported Tian Tian, Baichao sheet metal bending machine, KUKA robot, as well as the Swedish fuse factory, and CNC sawing machine, CNC lathe, CNC milling machine and other equipment, making the product more reliable.

### Visit Factory



### Workshop



### Exhibition







**Deliver, Shipping and Serving**





CLANGSONIC

# Shipping & Payment

Started working again,Started working again,Started working again.

